



Harlow Tye, Harlow, CM17

BUTLER  STAG



Forming part of the historic Moor Hall Farm is this charming and characterful three bedroom barn conversion situated off Chalk Lane.



- Three Bedroom Barn Conversion
- Open Plan Lounge/Kitchen
- Underfloor Heating Throughout
- Ample Off-Street Parking
- Outside Space
- Heating & Water Bills Included
- Pets Considered
- Available Now

Internally, accommodation comprises of an open plan lounge/kitchen/diner with exposed beams running throughout the room. To complete the ground floor there are two double bedrooms with the larger of the two having fully fitted wardrobes and a family shower room.

The first floor level offers a unique mezzanine bedroom with eaves storage space over looking the ground floor living area.

Externally, there's ample parking for two/three vehicles and outside space for al fresco dining.

The property is set within easy access to M11, Epping Train Station & Harlow Mill Train Station, both of which offer direct links to London Liverpool Street.

Available now. Bills included.



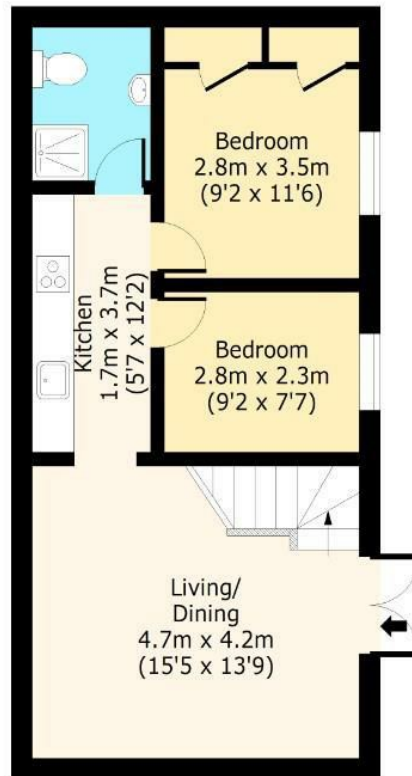


Harlow Tye



Ground Floor

Approx. 49.33 Sq. meters (531 Sq. feet)



First Floor

Approx. 22.05 Sq. meters (237 Sq. feet)



Total area: approx. 71.38 Sq. meters (768 Sq. feet) (Including Eaves Storage)

Total area: approx. 64.38 Sq. meters (693 Sq. feet) (Excluding Eaves Storage)

For illustration purposes only - not to scale

www.lpaplus.com

IMPORTANT NOTICE - These particulars have been prepared in good faith and they are not intended to constitute part of an offer or contract. We have not performed a structural survey on this property and the services, appliances and specific fittings have not been tested. All photographs, measurements, floor plans and distances referred to are given as a guide and should not be relied upon.

BUTLER & STAG

☎ 01992 667666

🏠 4 Forest Drive, Theydon Bois, Essex, CM16 7EY

✉ theydon@butlerandstag.com

www.butlerandstag.uk